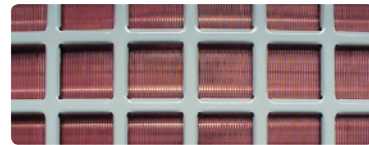




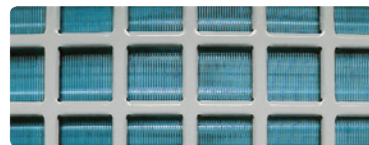
Air Systems

ROOMTOP
ROOFTOP
LARGE SPLIT

Common Specifications



Copper-copper coil:
Available as an option, copper-copper coils are often used for refinery/chemical sites or salt-laden air where it is difficult to service the unit.



Anti-corrosion blue protected fins:
Available as option, blue coated fins (conform to 1000 hrs salt spray fog ASTM B117 standard) will extend the life of your A/C in aggressive area. An economical alternative to copper-copper coils.



Cabinet:
Build to be use in harsh conditions, heavy gauge galvanised steel cabinet will provide years of dependable operation. Automatic line painting process degrease, phosphate, passivate, clean with demineralised water and powder paint backed on oven at 220°C casing panels. An exceptionally durable finish RAL9002 guaranteed by 800 hours fog spray protection process in accordance with DIN 50 021.



Quality and ELT:
Design, built and tested under ISO9001 quality system certification, we are constantly listening to customer comments. For this reason, our End of Line Test ELT strives to be as close as possible to the commissioning you carry out on site.



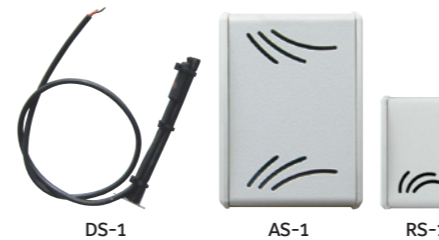
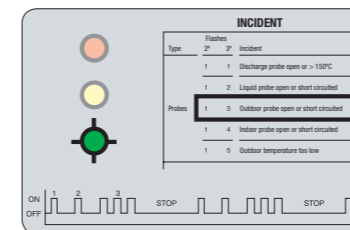
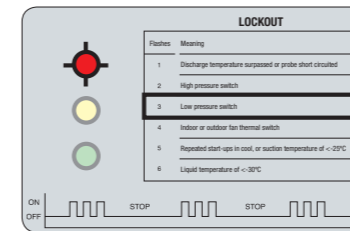
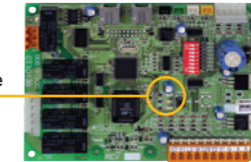
Features and benefits Thermostat DPC-1

- Day (normal), night (economy) and unoccupied (stand by).
- Lockout code on screen gives direct diagnostics.
- ON/OFF or programmable from dip switch setting.
- Day or night programmable state avoids wide internal temperature variation.
- 3 preset and 3 programmable profiles.
- Select the control sensor you want to use (integrated in the thermostat, return air in duct or room sensor).
- Turbo, normal or economy logic from dip switch setting.
- Temperature override.
- From -3°C to +3°C sensor offset.
- Average temperature with room or duct sensors.

Codes	Meaning
11	Circuit 1, Discharge temperature too high or probe short circuit
12	Circuit 1, High pressure switch, outdoor fan overload or compressor motor protection module
91	Selected sensor not valid
92	Indoor sensor not calibrated
93	Communication alarm
94	Pin alarm

Control System

Led Diagnostic Code



YKlon√3

The YKlon is a controller regulating all components and accessories. It will pro actively manage cool and heat stages to maintain a stable room temperature.

- Additionally, the benefits are:
- Redundancy on cool and heat stages (if one step is locked out, the PCB starts another one automatically).
 - Random start between units to minimise electrical tariff.
 - All stages will start in sequence to reduce peak inrush.
 - Reduces nuisance calls by using 3 times "you are out" on all safeties before a hard lockout occurs.
 - Automatic restart after power failure.
 - Compressors run time priority.
 - Alarm output relay and led diagnostic code.
 - No parameters to check before starting.
 - Lockout and incident level of protection.
 - Use a standard 2-stage thermostat but get 98% of YKlon features.
 - Last 10 lockouts stored in a non-volatile memory.
 - 4 heating stages on hot water heating.

YKphone485

The YKPhone485 is a complete communication pack that YORK can offer in order to provide a local network between units. Without any specific communication protocol knowledge, you can download the software and have a direct access to the units, change thermostat parameters, reset lockout, etc.... For more detail, see the following pages or contact you local agency.

YKtool

- Features and benefits YKtool
- Cooling and defrost test.
 - Reverse cycle, gas, hot water and electrical heating test.
 - Give access to input and output of the YKlon.
 - Give access to accessories status and read the probe values.

Thermostats with integrated sensors

Thermostat models	DPC-1	DPC-1R
Code	603786044	603786045
Roomtop	RTC and RTH	X
Roomtop	All models	X (1)
Split system	SOA and SOH	X
	SCOA and SCOH	X

Main features	DPC-1	DPC-1R
Strategy	Turbo, normal or economy	
Auto restart after power failure	●	●
Number of cool stages	2	1 2
Number of heat stages	2	1 2
Auxiliary Heat	●	●
Automatic Heat/Cool change over	●	●
Continuous or auto indoor fan	●	●
Manual setback (Day/Night key)	Day, night and unoccupied	
Override possibility	●	●
Compressor anti short cycle	●	●
°C Range cooling / heating	10 to 32°C / 9 to 32°C	
Programmable, 7-day	●	●
Lockout codes	●	●
Outdoor air temperature	●	with YKlon
Sensor selection	●	●

X : Delivered as standard with the unit. X (1) : Standard but has to be ordered separately.
O : Optional. ● : Function available.

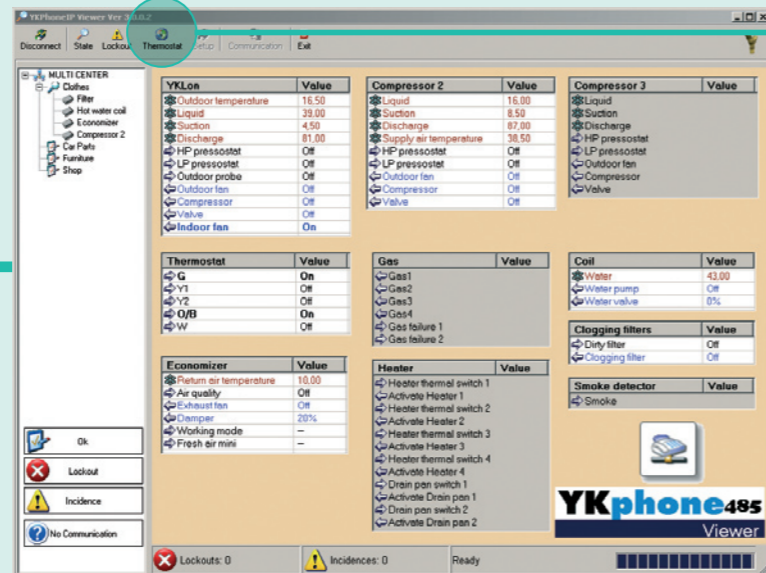
Duct sensor	Ambiance sensor	Room sensor
DS-1	AS-1 *	RS-1
S603786047	S603786049	S603786042

* To be fitted with DPC-1 version 2.0 or superior

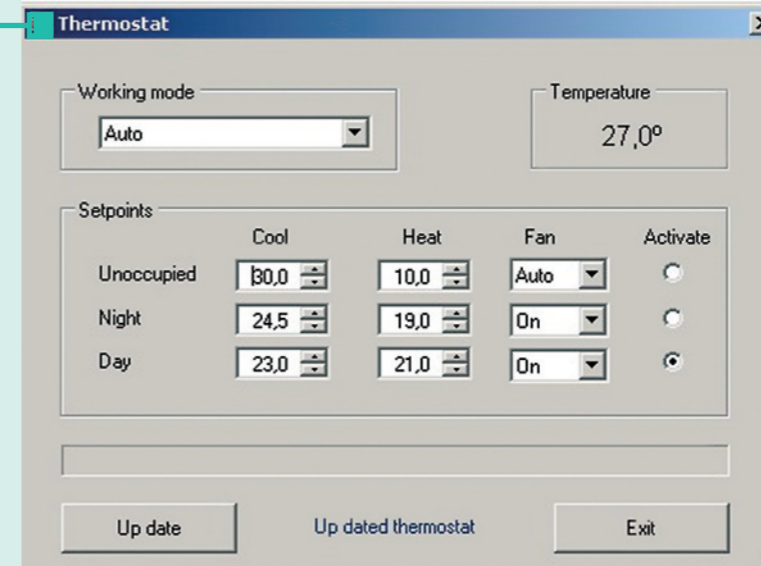
YKphone485

Do it yourself!

Main Screen



Thermostat Setting



- YKPhone485 is a simple monitoring tool to be used with a maximum of 16 units equipped with YKlon ✓3 board or superior
- It have been developed for internal or external maintenance team in supermarket, factory, etc...
- Monitor all main parameters as Inputs, Outputs, Temperatures & Accessories
- Consult & modify thermostat DPC-1 setting (communication)
- Reset the unit



YKphone485

I. max. 1000m.
BELDEN or equivalent
com cable

