

GEYSIR SERIES

Ground source heat pump

YHGS 06 to 16

A complete range from 5.8 kW to 16.6 kW



Control Panel

Intelligent control system to fully adjust and monitor heat pump parameters according to heating needs for optimal performance.

Cold outside? I don't care...

The new GEYSIR Series are the most suitable option for those houses where ground is the preferred source of energy. With COP up to 4.5, these units are the cheapest option to supply heat and hot sanitary water to your home.

Features

- High efficiency even in extreme winter conditions
- Optimized hot water production
- Leaving water temperature up to +65°C
- Integrated 180 l tank
- Passive/Active cooling optional
- Aesthetic design
- User friendly control and monitoring system
- Stainless steel water tank
- Optional models with passive cooling (for sizes 06 to 10)

GEYSIR SERIES

YHGS 06 to 16



Technical features

Set reference		YHGS				
Models	Sizes	06 G1MA - 06 G1TA	08 G1MA - 08 G1TA	10 G1MA - 10 G1TA	12 G1MA - 12 G1TA	16 G1TA
Heating capacity (*)	kW	5.8	8.1	9.5	11.1	16.6
COP (*)		4.2	4.6	4.4	4.5	4.4
Power supply	V/ph/Hz	230 / 1 / 50 - 400 / 3 / 50				400 / 3 / 50
Rated power compressor	G1TA	2.0	2.3	3.6	4.4	5.6
	G1MA	3.3	4.2	5.4	5.7	-
Number of compressors		1				
Type of compressors		Scroll				
Starting current	G1TA	14	25	29	32	45
	G1MA	58	56	97	108	-
Max leaving water temperature	°C	65°C				
Number of heating circuits		2				
Working range brine circuit	°C	-10°C / +20°C				
Working range heating circuit	°C	+20°C / +55°C				
Type of refrigerant		R407C				
Quantity of refrigerant	kg	1.20	1.30	1.45	1.55	2.10
Auxiliary heating	G1TA	3 / 6 / 9 (3 ph)				-
	G1MA	1.5 / 3 / 4.5 (1 ph)				-
External available pressure (heating)	kPa	44	42	39	51	57
Nominal flow (heating circuit)	l/h	360	720	720	1 080	1 440
Sound pressure at 1m	dB(A)	31	33	33	34	36
Dimensions (W x H x D)	mm	596 x 1 754 x 690				
Net weight	kg	229		238		242
Hot sanitary water tank	l	included (180 l)				
Water connections	Service water and heating	22 Cu				
	Brine	28 Cu				
Cooling module (Passive / Active)		Optional / Optional				

(*) Tested as per EN 255, 0/35°C G1MA: Single phase / G1TA: Three phases

Options / Accessories

Models	Codes	06 G1MA - 06 G1TA	08 G1MA - 08 G1TA	10 G1MA - 10 G1TA	12 G1MA - 12 G1TA	16 G1TA
Cooling Module Active	YHACC3318	●	●	●	●	●
Cooling Module Pasive	YHACC3319	●	●	●	●	●
3 Way Valve 20 24V	YHACC3803	●	●	●	●	●
3 Way Valve 25 230V	YHACC3801	●	●	●		
3 Way Valve 32 230V	YHACC3802				●	●
Pump Set complete	YHACC1870	●	●	●	●	●
	YHACC1871	●	●	●	●	●
	YHACC1977	●				
Plate heat exchanger for ground water	YHACC1978		●			
	YHACC1979			●		
	YHACC1983				●	
	YHACC1984					●
	YHACC5122	●	●	●	●	●
Flowguard UR32CTNR 12/80	YHACC3809	●	●	●	●	●
Electronic Flowguard zz7009	YHACC6002	●	●	●	●	●
Filter for Filling Device Brine DN25	YHACC1865	●	●	●		
Filter for Filling Device Brine DN32	YHACC1866				●	●
Room Sensor Controller 901150	YHACC2698	●	●	●	●	●
Filter 1" 5064084L	YHACC3776	●	●	●		
Filter 1-1/4" 5064085L	YHACC3777	●	●	●		
Filter 1-1/2" 5064086L	YHACC3778				●	●
Flexible hose 22L600mm	YHACC6015	●	●	●		
Flexible hose 25L600mm	YHACC6000	●	●	●		
Flexible hose 32L600mm	YHACC6001				●	●
Rubber hose 2x28L600mm	YHACC6012	●	●	●	●	●
Pool control, complete with 3 Way Valve	YHACC3754	●	●	●	●	●
Expansion card for cooling/shunt/pool	YHACC6009	●	●	●	●	●

GEYSIR AIR SERIES

Air source heat pump

YHAS 06 to 12

A complete range from 5.9 kW to 11.3 kW



When comfort and economy come together

For those for whom the ground source installation is not an option, the GEYSIR AIR Series, by retrieving the energy from the air, combines the heat pump technology and low installation costs but still keeps efficiencies up to 3 times greater than a conventional gas boiler.

Features

- User friendly control and monitoring system
- Low noise level
- Easy installation
- Intelligent defrosting
- Anti corrosion coated condenser fins
- Heat recovery for exhaust air as option

GEYSIR AIR SERIES

YHAS 06 to 12



Technical features

Set reference			YHAS			
Models	Sizes		06 G1MA - 06 G1TA	08 G1MA - 08 G1TA	10 G1MA - 10 G1TA	12 G1MA - 12 G1TA
Heating capacity (*)	kW		5.9	8.0	9.9	11.3
COP (*)			3.9	4.1	4.2	4.9
Power supply	V/ph/Hz		230 / 1 / 50 - 400 / 3 / 50			
Rated power compressor	G1TA	kW	2.0	2.3	3.6	4.4
	G1MA	kW	3.3	4.2	5.4	5.7
Number of compressors			1			
Type of compressors			Scroll			
Starting current	G1TA	A	14	25	29	32
	G1MA	A	58	56	97	108
Max leaving water temperature	°C		65°C			
Number of heating circuits			2			
Working range brine circuit	°C		-20°C / +20°C			
Working range heating circuit	°C		+20°C / +55°C			
Type of refrigerant			R404A			
Quantity of refrigerant	kg		0.95	1.45	1.50	1.60
Auxiliary heating	G1TA	kW	3 / 6 / 9 / 12 / 15 (3 ph)			
	G1MA	kW	1.5 / 3 / 4.5 (1 ph)			
External available pressure (heating)	kPa		44	41	38	52
Nominal flow (heating circuit)	l/h		360	720	720	1 080
Sound pressure at 1m (Indoor / Outdoor)	dB(A)		31 / 51	33 / 51	33 / 61	34 / 61
Dimensions Indoor / Outdoor (W x H x D)	mm		596 x 1 754 x 690 / 1 145 x 1 175 x 612			
Net weight Indoor / Outdoor	kg		260 / 80			
Hot sanitary water tank	l		included (180 l)			
Water connections	Service water and heating		22 Cu			
	Brine		28 Cu			

(*) Tested as per EN 14.511 7/35°C excluding circulation pumps and outdoor unit G1MA: Single phase / G1TA: Three phases

Options / Accessories

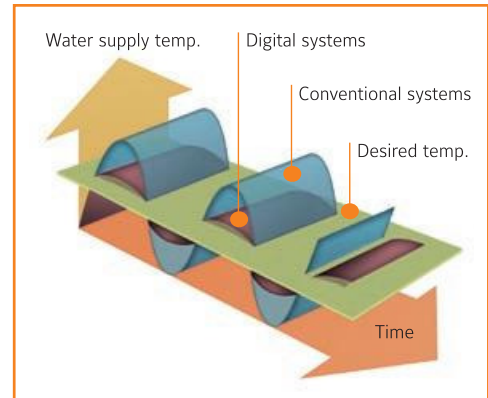
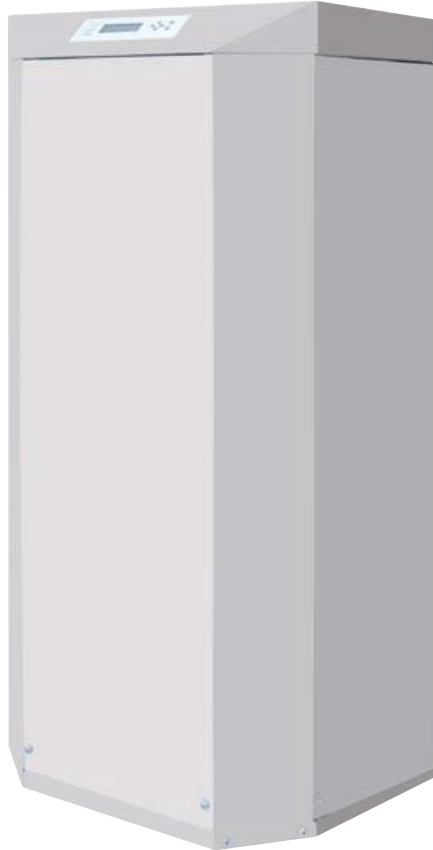
Models	Codes	06 G1MA - 06 G1TA	08 G1MA - 08 G1TA	10 G1MA - 10 G1TA	12 G1MA - 12 G1TA
3 Way Valve 20 24V	YHACC3803	●	●	●	●
3 Way Valve 25 230V	YHACC3801	●	●	●	
3 Way Valve 32 230V	YHACC3802				●
Pump Set complete	YHACC1870	●	●	●	●
	YHACC1871	●	●	●	●
	YHACC1977	●			
Plate heat exchanger for ground water	YHACC1978		●		
	YHACC1979			●	
	YHACC1983				●
	YHACC1984				
Heat Recovery System	YHACC5122	●	●	●	●
Flowguard UR32CTNR 12/80	YHACC3809	●	●	●	●
Electronic Flowguard zz7009	YHACC6002	●	●	●	●
Filter for Filling Device Brine DN25	YHACC1865	●	●	●	
Filter for Filling Device Brine DN32	YHACC1866				●
Room Sensor Controller 901150	YHACC2698	●	●	●	●
Filter 1" 5064084L	YHACC3776	●	●	●	
Filter 1-1/4" 5064085L	YHACC3777	●	●	●	
Filter 1-1/2" 5064086L	YHACC3778				●
Flexible hose 22L600mm	YHACC6015	●	●	●	
Flexible hose 25L600mm	YHACC6000	●	●	●	
Flexible hose 32L600mm	YHACC6001				●
Rubber hose 2x28L600mm	YHACC6012	●	●	●	●
Pool control, complete with 3 Way Valve	YHACC3754	●	●	●	●
Expansion card for cooling/shunt/pool	YHACC6009	●	●	●	●

GEYSIR VARIO SERIES

Ground source heat pump digital

YHGD 11 to 30

A complete range from 11.7 kW to 30.5 kW



Variable capacity compressor

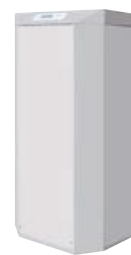
By changing the capacity of the compressor, Digital Systems provide a more stable water temperature, energy saving and increase the lifetime of the unit.

Varying the capacity until the top of comfort

Following the impact of inverter technology on the residential air conditioning market, the variable capacity compressor has reached the heat pump market bringing the same benefits such as improved efficiency and increased lifetime of the unit.

Features

- Variable capacity compressor
- Constant leaving water temperature
- Passive/Active cooling as an option
- Water tank optional (160 or 300l)
- Compact unit
- Up to 30 kW heating capacity



GEYSIR VARIO SERIES

YHGD 11 to 30

Technical features

Set reference		YHGD					
Models	Sizes	11 G1TA	14 G1TA	17 G1TA	19 G1TA	23 G1TA	30 G1TA
Heating capacity (*)	kW	11.7	14.3	17.1	19.2	23.5	30.5
COP (*)		4.5	4.5	4.5	4.6	4.6	4.6
Power supply	V/ph/Hz	400 / 3 / 50					
Power input	kW	2.9	3.5	4.2	4.7	5.7	7.3
Number of compressors		1					
Type of compressors		Digital Scroll					
Starting current	A	48	63	69	95	95	110
Max leaving water temperature	°C	61°C					
Number of heating circuits		2					
Working range brine circuit	°C	-10°C / +20°C					
Working range heating circuit	°C	0°C / +45°C					
Type of refrigerant		R407C					
Quantity of refrigerant	kg	2.4	3.0	3.5	4.0	4.3	4.8
External available pressure (heating)	kPa	42	45	39	35	70	47
Nominal flow (heating circuit)	l/h	2 010	2 460	2 940	3 300	4 040	5 200
Sound pressure at 1m	dB(A)	46	47	47	48	49	49
Dimensions (W x H x D)	mm	590 x 1 200 x 700			790 x 1 200 x 800		
Net weight	kg	150	162	170	200	226	249
Hot sanitary water tank	l	Optional (160 / 300 l)				Optional (300 l)	
Water connections	heating and brine	inches	1 1/4"	1 1/4"	1 1/4"	1 1/2"	1 1/2"
	service water	inches	3/4"	3/4"	1"	1"	1"
Cooling module (Passive / Active)		Optional / Optional					
Cooling capacity	kW	12.1	15.0	18.0	20.1	24.5	32.3
Working range cooling circuit	°C	+7°C / +20°C					

(*) Tested as per EN 255, 0/35°C

Options / Accessories

Models	Codes	11 G1TA	14 G1TA	17 G1TA	19 G1TA	23 G1TA	30 G1TA
3Way valve for circuit 2 - Kvs 4	YHACCCV4	●	●	●	●	●	●
3Way valve for circuit 2 - Kvs 10	YHACCCV10	●	●	●	●	●	●
Flow switch (factory fitted)	YHACCF51	●	●	●	●	●	●
Plate heat exchanger for ground water	YHACCGWWT11	●					
	YHACCGWWT14		●				
	YHACCGWWT17			●			
	YHACCGWWT19				●		
	YHACCGWWT23					●	
	YHACCGWWT30						●
Temperature sensor circuit 2	YHACCA99	●	●	●	●	●	●
Reference-room controller	YHACCLPNRM	●	●	●	●	●	●
Adjustable feet-set	YHACCAVMS1	●	●	●	●	●	●
Expansion vessel for brine-circuit 8l	YHACCEV8	●	●	●	●	●	●
Soft starter	YHACSSKDS1117	●	●	●			
	YHACSSKDS1930				●	●	●
Water filter 2"	YHACCF1123	●	●	●	●	●	
Water filter 2 1/2"	YHACCF30						●
Electric heater for Water tank 3 kW	YHACCEH3	●	●	●	●		
Electric heater for Water tank 5 kW	YHACCEH5					●	●
Water tank 160l	YHACCSWB160	●	●	●	●		
Water tank 300l	YHACCSWB300				●	●	●